

ADMINISTRATION
 MAYOR THOMAS BAILEY 245-3925
 COUNCIL MEMBERS
 KAYLENE AMES 435-245-6950
 CARL LEATHAM 435-757-7268
 BOB LINDLEY 435-881-4186
 DENISE N. LINDSAY 435-245-6727
 AUSTIN WOOD 435-757-5581



WELLSVILLE CITY
 NEWSLETTER
WWW.WELLSVILLECITY.COM



OTHER MISC. PHONE NUMBERS
 Animal Control 512-6658
 CITY OFFICE 245-3686
 Fire Chief 757-7490
 Garbage 866-909-4458
 Hyrum Library 245-6411
 Post Office 245-4321
 Sheriff Dispatch 753-7555

JUNE 2024

WATER RESTRICTIONS

Wellsville City Utilities is asking all of its customers who water their lawns to do so on designated days of the week based on your house number beginning on June 1, 2024. It's simple to do. Check your house number, even or odd?

EVEN HOUSE NUMBERS....

If your house number ends in an even number, such as 532, 1298, 164, water only on Monday, Wednesday and Friday.

ODD HOUSE NUMBERS....

If your house number ends in an odd number, such as 127, 531, 1587, water on Tuesday, Thursday and Saturday.

WHAT ABOUT SUNDAY?

We all take a break by not watering on Sunday, but our yards will still receive enough water to keep them healthy and attractive. Typically, even in dry and hot conditions, it is not necessary to water every day. Thank you for your cooperation in helping to conserve our water.

WELLSVILLE CHOIR MEMBERS NEEDED

The Wellsville City Choir will begin rehearsals for the Founder's Day Sunday evening program. The practices will be held on the following Sundays at 7:00 p.m. in the Stake Center: July 28, August 4, August 11, August 18, and August 25th. The program will take place on Sunday, September 1st, 2024. All interested community singers, young, old and in the middle are encouraged to come and sing. For more information contact Vicki Orme at (404) 202-7291 or email Vickie.orme@gmail.com.

PUBLIC HEARING REGARDING WATER IMPROVEMENTS

The City of Wellsville has applied to the State of Utah, Division of Drinking Water for a loan to be used in the making improvements to the Wellsville's water system, including drilling a new well and constructing a new well house, a pump line to an existing reservoir and a flushing/drain line for the well. A public hearing will take place on **July 3, 2024 commencing at 6:00 p.m.** to receive input from the public. The hearing will take place at 75 East Main. All members of the community are invited to attend and participate in the public hearing.

PICKLEBALL COURTS

Wellsville City is excited to announce that our new pickleball courts ARE NOW OPEN FOR YOUR ENJOYMENT. They are located on the southwest corner of 100 South 100 East.

FOOD TRUCK FRIDAY

Wellsville City is hosting Food Truck Friday, on **June 21st from 6-9 p.m.** at the City Square. There will be a variety of yummy food and drinks. Entertainment will be provided by Jake Christensen. Come and check it out, You won't want to miss this!!



THE WELLSVILLE CITY OFFICE WILL BE CLOSED ON MONDAY, JUNE 17TH IN OBSERVANCE OF JUNETEETH NATIONAL INDEPENDENCE DAY.

SPLASH PAD HOURS

STARTING ON JUNE 1ST THE SPLASH PAD WILL BE AVAILABLE FOR USE FROM 11:00 A.M. TO 7:00 P.M.

FUNDRAISING BREAKFAST

The Wellsville Boy Scout Troop 21 sponsored by the Wellsville Foundation is having a pancake breakfast at the Bowery on **July 13, from 8:00 to 11:00 a.m.** A delicious breakfast of pancakes, eggs, sausage and orange juice will be served. Tickets are \$10 per person or 5 tickets for \$40. Scouts will be selling tickets door to door during the 2nd week of July, or you can purchase tickets at the Bowery the morning of the event. A raffle for donated prizes will be sold at the event. Raffle tickets will cost \$1.00 each. Any business that would like to donate items for the raffle please contact Mark Anderson at 435-770-9758 or email b52guy@gmail.com. Thank you for your support!

HEALTHY HABITS FOR CLEAN STORMWATER

- Use pesticides and fertilizers sparingly. When use is necessary, use these chemicals in the recommended amounts. Avoid application if the forecast calls for rain; otherwise, chemicals will be washed into your local stream.
- Select native plants and grasses than are drought and pest resistant. Native plants require less water, fertilizer, and pesticides.
- Sweep up yard debris, rather than hosing down areas. Compost or recycle yard waste when possible.
- Don't overwater your lawn. Water during the cool times of the day, and don't let water run off into the storm drain.

ANY BULK GREEN WASTE IS TO BE TAKEN TO THE LOGAN LANDFILL LOCATED AT 153 NORTH 1400 WEST IN LOGAN.

MUSEUM NEWS

We are excited to launch our summer-long 2024 children's program, Passport to Summer Fun. You can pick up your passport at the museum starting on Tuesday, June 11th. The passport includes a bunch of fun and educational activities. The Cold War Veterans Foundation are hosting a Cold War Victory Medal Pinning Ceremony on September 12, 2024. Any veterans who served at any time between September 2, 1945 and December 26, 1991 is eligible to receive the medal so please contact museum staff at museum@hyrumcity.com (435)245-0208, or by coming into the museum to be added to the program.

PLEASE SEE THE REVERSE SIDE OF THIS NEWSLETTER FOR INFORMATION ABOUT HOW YOU CAN AFFECT THE WATER YOU DRINK

YOU CAN AFFECT THE QUALITY OF THE WATER YOU DRINK

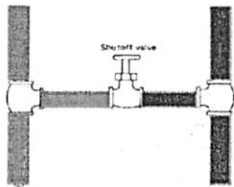
Many public drinking water systems are contaminated each year by pollutants or contaminants that backflow into the water system through unprotected cross-connections.

Identifying and eliminating or protecting cross connections is a matter of public health!

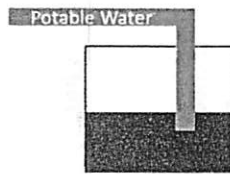
What is a Cross-Connection?

A cross-connection is a physical connection (piping configuration) between the public drinking water system and anything else, including another

water supply that can allow undesirable pollutants or contaminants to backflow into the public drinking water system.



Drinking Water Non-potable water or substance



What is Backflow?

Backflow is the reversal of flow from a residential or commercial water system back into the public drinking water system. A backflow incident could occur if the water systems pressure decreases, or the

customer's water pressure is higher than the water systems pressure. A backflow incident could carry pollutants or contaminants into our public drinking water supplies making them unsafe to use.



The Plumbing Code and the Utah Public Drinking Water Rules require that all cross connections be eliminated or protected against backflow by installing an

approved backflow device or assembly that will insure that no impurities or contaminants are introduced to the public drinking water supply.

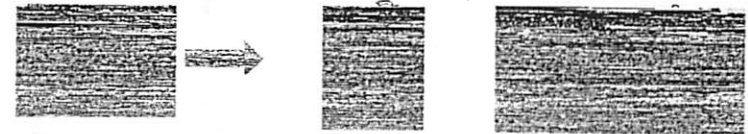
Can I protect my home or business from the dangers associated with cross-connections and backflow?

Yes! Several common cross connections are described below:

Threaded Hose Connections (Hose Bibs)

A large majority of backflow incidents are created by the common garden hose. Hoses can be connected to most anything that may contain undesirable substances such as chemical sprayers, buckets and pools, stock troughs. Plumbing Code requires that all threaded potable water outlets (hose bibs or sill cocks), except

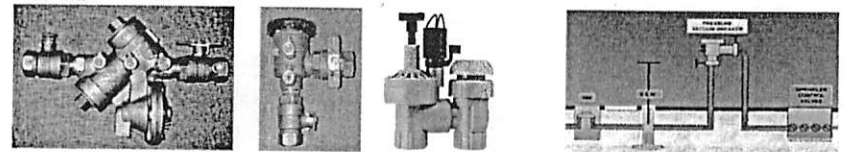
water heater drains and clothes washer connections, be protected by a non-removable hose bib vacuum breaker or an atmospheric vacuum breaker. The installation of a hose bib vacuum breaker is an inexpensive way to protect against contamination.



Landscape Sprinkling System

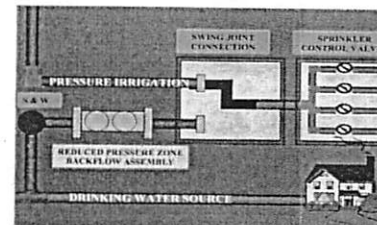
The Plumbing Code requires that all landscape sprinkling systems connected to the public drinking water system be equipped with an approved backflow

prevention device or assembly. Landscape irrigation systems could subject the drinking water supplies to things such as fertilizers, pesticides and animal waste.



Any sprinkling system that can utilize both public drinking water supplies and secondary water supplies must follow specific plumbing regulations to prevent raw water from entering the drinking water system!

Please contact your local drinking water supplier for specific requirements regarding landscape irrigation systems and which type of backflow prevention is appropriate for your landscape irrigation system.



Where can I get more info or have my questions about cross connections answered?

Call your local public drinking water agency or plumbing inspector regarding cross connection control and backflow prevention requirements in your area.

For further info, call the Utah Division of Drinking Water at (801) 536-4200.